



Texas ICES News December 2014



December 2014

Texas ICES

Inside this issue:

2015 Calendar	2
Members Only Web	2
Business Meeting	3
New Members	3
ICES Class	4
MidYear	5
Awards/Scholarships	5
Contacts	6

Texas Officers

- * TX Rep:
Suzy Zimmermann
TexasICES@gmail.com
- * Treasurer: Jan Morris
txicesdos@gmail.com
- * Secretary: Lisa Fitch
Lisa0130@yahoo.com
- * ALTERNATES:
Area I : Mandy Popejoy
mandy@mysweetinsanity.com
- Area II: Donna Doyle
txicesarea2@gmail.com
- Area III: Juanita Rone
Juanita_rone@hotmail.com
- Area IV: Kathy Brinkley
cakekat@aol.com

The Year in Review

It has been such a wonderful experience to serve as your ICES Representative this past year. In 2014 we registered 82 new Texas ICES Members. We hosted four area DOS events. For the first time there was a DOS in each area of Texas. We also offered several ICES Sponsored Classes. Our participants learned a lot from our demonstrators and class instructors, with fun demos and hands-on activities, networked with fellow sugar artists and won thousands of dollars in raffle items.

I was honored to attend my first MidYear and have the opportunity to represent Texas in Omaha. I learned so much about the inner-workings of ICES, how our voices do matter and how we can impact ICES policy. I also had the opportunity to make many new sugar friends and we are working together to make ICES the best it can be.

In August, Texas sent a delegation of 72 to Albuquerque, NM for the ICES Convention. Team Texas (Yvette Humbert, Cinthya Rommriell, and myself) came in third in the live cake challenge there. Boy did we learn a lot from that experience. Many of our members created beautiful works for display. Texas was honored when our own Helen Osteen was awarded the Wilbur Brand Memorial Service Award.

2014 was also bittersweet as we mourned the loss of Texas ICES member Marissa Beltran.

For ICES 40th Anniversary, a discount membership program was announced and each state has been challenged to register 100 ICES members before the Omaha Convention. We have created the Texas ICES 100 Club and to date have registered 34 members. I challenge each of you to sign up 1 new ICES Member or Associate before the convention in 2015 to help us reach that goal. Why not consider giving an ICES Membership or Associate Membership as a Gift this Holiday Season!

And 2015 looks to be even more exciting. We already have the dates secured for our Four DOS Events in 2015 (see page 2). I am also planning some mini-events for our Texas ICES members, so stay tuned for that information. Your ideas are always appreciated.

I am hoping that we have a record number of Texas ICES who attend the Convention in Omaha. I will put a roommate or rideshare match-up section in the Members Only section of the Website to help people. Go to www.ICESConvention.org for more information.

I am looking forward to an exciting 2015 for Texas ICES and hope you are too! Wishing you all a blessed holiday season.



2015 Calendar of Events

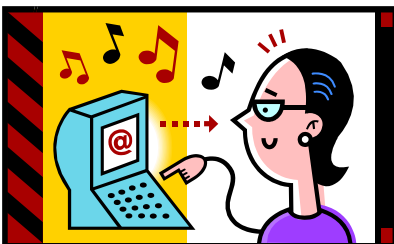


Mark you Calendars to Join Us!

- Feb 1** **Area IV DOS**
 Lake Conroe KOA, 19785 Highway 105 West, Montgomery, TX 77356
 Demos: James Rosselle, Sidney Galpern, Edward Frys, Jan Gresham
 Pre DOS Classes with Sidney Galpern sponsored by Houston Cake Club
 Post DOS Classes with James Rosselle at the Cake Craft Shoppe
- March 5-8** **ICES Midyear**
 Mobile, AL www.ICESMidyear.org
- April 12** **Area II DOS and Classes**
 DFW Area
- June 7** **Area III DOS, Classes, and Texas ICES Elections**
 Corpus Christi, TX
 Hands on with Susan Carberry & Peggy Tucker followed by Lunch,
 Elections, and ending with Demonstrations
- July 30—Aug 2** **ICES Convention**
 Omaha, Nebraska Visit www.ICESConvention.org
- Oct 11** **Area I DOS & Classes**
 Lubbock, Texas
 Demos by Wayne Steinkopf, Callye Alvarado, Ruth Rickey
 Pre DOS Classes with Ruth Rickey TBA
 Post DOS Class: Fairytale Wedding Cake with Wayne Steinkopf - 2 days,
 \$499 ICES Members, \$549 Non Members (Payment Plan is Available)
 Limited Seating. A \$100 deposit holds your spot.
Register before January 31, 2015 as save \$50.

Registration is NOW OPEN at
www.TexasICES.org

Website News - Members Only



Lots of new updates are online at www.TexasICES.org and the Members Only Section is NOW OPEN. The Members Only Password will change with each newsletter.

User Name: **icesmember** (all lower case)
 Password: **ICES15** (all CAPS)

Nov 9 Area III DOS Business Meeting Report (Abridged)

Read full minutes on the Members Only Section of the Website

Treasurer's report: - Jan Morris
Balance as of 11/1/14 -approx. \$7600
Annual ICES check received and will be deposited. New balance will reflect ICES check plus any monies earned from today's DOS.

Old Business: Standing Rules

Passed by ICES at 2014 MidYear

- ADA compliant facilities are to be considered when planning events
- Any passed motions of a particular issue will supersede any previous motions of the same issue, without the need to rescind previous motions.

Passed by Texas ICES

- **Officer reimbursement** for required travel: Representative, treasurer and secretary expenses to attend a DOS or meeting outside their area will be paid by the chapter upon submitting receipts to the Representative. This shall be limited to include travel stipend based on mileage plus lodging not to exceed one night's stay.
- **DOS Registration Fees:** - DOS Registration for ICES members \$25 for early registration/ \$35 at the door; Non-members \$35 for early registration/ \$45 at the door; Drivers will be \$15. Children and culinary students (with ID) will be

\$15. Children must be 10-17 years of age or older and accompanied by an adult. When an election is held at a DOS, the registration fee for Elections will be: Members \$10 Early Registration and \$20 at the Door, Non-Members, Culinary Students, Children and Drivers will be at the regular DOS rate.

- **Vendors:** Vendor Fee: \$25 for ICES Members/\$50 for Non-Members. All vendors must donate an item for the raffle. Helpers for Members will be \$15 per helper, Helpers for Non-Members will be \$25 per helper. Vendor area includes 1 table. Additional tables \$10 each based on availability. If space permits, vendors may bring an additional table at no additional charge. Booth area to be designated at each DOS.
- **MidYear Reimbursement:** Chapter will pay for all reasonable expenses incurred by the Representative to attend Midyear Convention, less the amount paid by national ICES upon submission of expense receipts to the Treasurer. If receipts are not submitted, no reimbursement is allowed.
- **Expenditures:** All expenditures must be approved IN ADVANCE. For reimbursements, two signatures will be required. See the following for proper signature assignment. For Representative's expenses, the signature of the Treasurer and the Secretary are

required. For the Treasurer, the Representative and the Secretary's signature are required. For the Secretary and Alternates, the Representative and Treasurer's signatures are required.

- **DOS Demonstrators Travel:** Demonstrators traveling 150 miles and over to demonstrate for a DOS will be allowed the option of receiving reimbursement for travel or allowed a vendor booth for free. Reimbursement will be as follows: \$50 for 150 - 200 miles; \$75 for 200 - 300 miles; \$100 for 300 or more miles.
- **Travel and reimbursement for classes or other Texas ICES sponsored events:** Travel and Reimbursements to bring in teachers for Texas ICES Sponsored Events will be negotiated by the officers of Texas ICES on a case by case basis.

New Business:

- Passed 2015 elections to be held June 7 in Corpus Christi, Tx.
- Passed to reimburse Suzy Zimmermann for the microwave used in previous day's classes.
- Passed to reimburse Jan Morris for FedEx expense to ship cake boards to San Antonio for DOS.
- Passed to reimburse third night hotel for Susan Carberry and Peggy Tucker due to prep for hand's on DOS.

TexasICES 100 Club

Hera Logan	Veronica Bochat	Rita Gonzalez Bush	Stephen Horn	Theresa Donais
Taylor Watts	Gary Brinkley	Sharon Kemp	Veronica Teng Peralta	Casey Marchan
Margaret Trammell-Kelly	Craig Shannon	Leticia Martinez	Bronwen Weber	Rachel Okon
Angelina Vega	Elma Vega	Russell Murphy	Cinthya Romriell	Joanne M Serna
Brenda Byrd	Marissa Beltran	Ambar Peyro	Sylvia M James	Anastasia Ward
Crystal England	Cynda Reznicek	Kathy Tucker	Cindy Autrey	Randy Fleisher
Chantel Kearney	Robin Clements	Marsha Wiley	Shellie Campos	



2015 Class Special - A Great Holiday Gift!



It's not too early to sign up for

Fairytale Wedding Cake Class

Lubbock, TX (location TBD)

Monday, October 12 and Tuesday, October 13, 2015

Two day class. 9 am - 5 pm+ each day

Light lunch provided each day.

All materials are included
and tools are available for class use.

\$499 for ICES Members, \$549 for Non Members

EARLY BIRD DISCOUNT!

Register by January 31, 2015

\$449 ICES Members, \$499 Non Members

Limited Seating.

\$100 reserves your seat.

Payment Plans Available

www.TexasICES.org



Just bring yourself and be ready to have a good time!

In this comprehensive two day class, students will learn how to create Swank Cake Design's famous "Fairytale" wedding cake. Using real cake in a video demonstration, Wayne will share his super easy methods for carving and assembling the hourglass and pumpkin shaped tiers on this cake. Proper stacking and assembly will also be covered. Students will re-create the entire cake using styrofoam dummies so that they will have a beautiful new display piece! As a bonus, students will also learn how to use Marina Sousa's Baroque bead mold* with poured isomalt to create the chandelier style sugar beads that serve as a focal point for this cake.

Students will leave class with:

~completed 6 tier dummy cake

~instructions and knowledge and to make this cake again

~DVD detailing how to carve and cover the "hourglass" and "pumpkin" shapes

*Bead molds will be available for purchase.

INSTRUCTORS: Wayne Steinkopf & Chuck Hamilton

ICES MidYear March 5-8, 2015

ICES' Midyear meeting is open to all members. This meeting provides an opportunity to discuss business matters and concerns relevant to the organization. You are invited to join us March 5-8 in Mobile, AL where you can experience genuine southern charm and elegance. In addition to the business meetings, there is an evening of mystery, suspense, food and fun planned for our Saturday evening dinner, which will be held at the Mobile Carnival Museum.



Show Directors
Rebecca McGreal
Barbara Sullivan

The Azalea City awaits you. www.icesmidyear.org

directors2016@icesconvention.org

ICES Scholarships and Awards

During the ICES's Annual Convention awards & scholarships are given out. This is your chance to participate in the process.

All members in good standing can nominate someone for either the Hall of Fame Award or the Wilbur Brand Memorial Service Award.

The Hall of Fame Award is the most prestigious award the organization gives out. Those who have won this award are people who have made an impact in the world of sugar arts by writing books, teaching classes or by developing new products or techniques. They are selfless in serving our organization and giving credit where credit is due. You will often find them patiently encouraging a new decorator and answering "just one more quick question". To nominate someone for the Hall of Fame award the member must submit the nomination, postmarked by January 15th, on the ICES Hall of Fame Nomination Form to be valid.

The Wilbur Brand Memorial Service Award was established to recognize and honor people who have given exceptional service to ICES. The recipient must be living, but does not have to be an ICES member. They should have contributed exceptional service to ICES

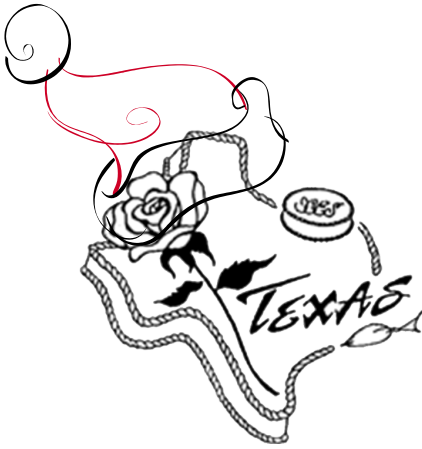
for an extended period of time (3 years or more), cannot be an ICES contract employee or be currently serving ICES Board of Directors. To recommend someone, contact an ICES Board of Directors member with the name of an outstanding person by March 1st.

Scholarships are awarded to ICES members who apply and are looking to further their knowledge of the sugar arts. Each year up to ten \$1000 scholarships are awarded to ICES members. An ICES Approved Teacher must teach any classes taken by a scholarship winner. Since there may not be an ICES Approved Teacher near the recipient's home, up to 40% of the award may be used for supplies, travel, hotel, and meals. Additional scholarships may be given from Memorial Scholarship Funds, the amounts of these scholarships vary depending on the amount of money available in the fund. Scholarship applications are available on the ICES website or from the Scholarship/Awards Chairman. All scholarship applications must be postmarked by January 15.

www.ICES.org



Texas ICES



CONTACTS

Suzy Zimmermann, Representative
(210) 201-3498 texasices@gmail.com

Jan Morris, Treasurer
(940) 230-3728 txicesdos@gmail.com

Lisa Fitch, Secretary
(979) 764-8508 lisa0130@yahoo.com

Mandy Popejoy, Area I Alternate
(806) 215-3067 mandy@mysweetinsanity.com

Donna Doyle—Area II Alternate
(903) 477-0786 txicesarea2@gmail.com

Juanita Rone, Area III Alternate
(956) 744-2914 Juanita_rone@gmail.com

Kathy Brinkley — Area IV Alternate
(936) 266-0061 cakekat@aol.com

At the close of another year
we gratefully pause
to wish you a warm and happy
Holiday Season

From the Texas ICES Officers and Alternates

*Suzy Zimmermann, Jan Morris, Lisa Fitch
Mandy Popejoy, Donna Doyle, Juanita Rone, Kathy Brinkley*

Happy Holidays